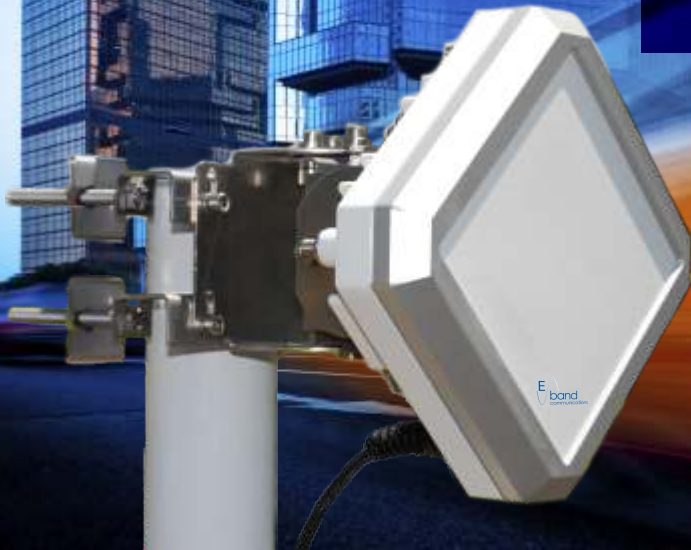


E-Link Mini

Compact Street & Campus Level Wireless Bridge

- Affordable 60 GHz short range solution
- Extremely small & unobtrusive design
- Perfect for quickly connecting buildings
- Backed by E-Band's renowned tech support
- No external power supply needed
- Less than half the size, weight and power consumption of competing solutions!



Advanced street-level solution

E-Band's 60 GHz E-Link Mini provides a highly secure point-to-point data link that is ideal for connecting buildings at street or campus level. Its design & performance makes it perfect for network extension, providing an aesthetically superior flat panel solution that is perfect for sensitive architectural settings. This extremely small radio (7.2 x 7.2 in / 182 x 182 mm) is easily installed with one cable (PoE). A fast-connect wall mount is included.

Applications

- Backhaul and LAN Extension
- Campus Connectivity
- Disaster Recovery
- Redundant Access/Network Diversity
- Temporary Connections for Events
- Mesh and Multipoint Networking
- Metropolitan Area Networks (MAN)
- Homeland Security

Features & performance

- Less than half the size, weight and power consumption of competing solutions, and doesn't require external power supply
- Spectrum efficient QPSK modulation
- Link availability up to 99.999%
- Advanced ultra small, high gain flat panel technology
- Easy installation using visual alignment aid & flat/wall mount bracket (included)
- 320 Mbps Full duplex
- License-free operation in most countries
- PoE (just one cable handles power and data transmission)
- Management using built-in browser-based HTTP or SNMPv2
- QoS/flow control
- 10/100/1000BaseT
- Flexible options such as POE Injector, Surge Protector and Pipe Mount Bracket



Connecting a digital world.™

System Parameters

| | |
|----------------------------|-----------------|
| Frequency Band | 57 / 64 GHz |
| RF Interface | FDD |
| Modulation | QPSK |
| Transmit/Receive Frequency | 59.5 / 62.0 Ghz |
| System Gain | 150.9 dB |
| Forward Error Correction | Reed-Solomon |

Tributary

| | |
|-----------|-----------------------------------|
| Data Rate | 320 Mbps full duplex (Ethernet) |
| Interface | 10/100/1000BaseT |
| Connector | RJ-45 (includes weather seal kit) |
| Cable | Cat5E / 328 ft (100m) |

Network

| | |
|---------------------|---------------|
| Ethernet Frame size | 9000 bytes |
| Latency | <50 μ sec |
| VLAN | IEEE 802.1q |
| QoS | Flow Control |

Electrical / Environmental

| | |
|-------------------|----------------------------------|
| Input Voltage | 48 VDC (PoE+, IEEE 802.3af) |
| Power Dissipation | 18 watts |
| Temperature Range | -27°F to +131°F / -45°C to +55°C |
| Altitude | 15000 ft / 4500 m |
| Humidity | Outdoor Unit All Weather |

Management

| | |
|-----------------|----------------------------|
| Craft Interface | Embedded (HTML) web server |
| EMS | SNMPv2 |
| Alignment Port | QMA (with adapter cable) |

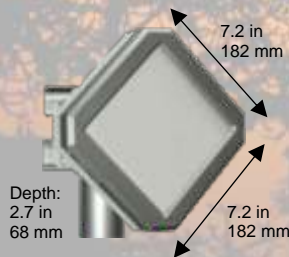
Physical

| | |
|---------------------|--|
| Weight | 5.4 lbs (2.4kg) terminal / 4.0 lbs (1.8kg) opt. pipe mount |
| Terminal Dimensions | 7.2 in x 7.2 in x 2.7 in (182 x 182 x 68 mm) |
| Antenna | Integrated Planar Slot Array |

Regulatory

| | |
|--------|--|
| US | FCC Part 15 |
| Canada | RSS 210 |
| Europe | CE EN 50371, EN 55022, EN 55024, EN60950-1, EN 302 217-3, EN 302 217-4-2 |

| | |
|--------|-------------|
| Safety | IEC 60950-1 |
|--------|-------------|



E-Band Communications Corporation
10095 Scripps Ranch Ct., Suite A
San Diego, CA 92121, USA
858-408-0660
www.e-band.com

©Copyright 2010. Specifications listed are typical and subject to change without notice.
E-Band™ is a trademark of E-Band Communications Corporation. V100510

